

PRODUCT INFORMATION

LumiClad panels are a compressed, autoclaved, cellulose fibre reinforced silica/cement panel, specially formulated and prepared to meet the requirements for use in exterior applications.

LumiClad panels have a smooth flat surface and a neat square edged finish, for enhanced expressed joint facades.

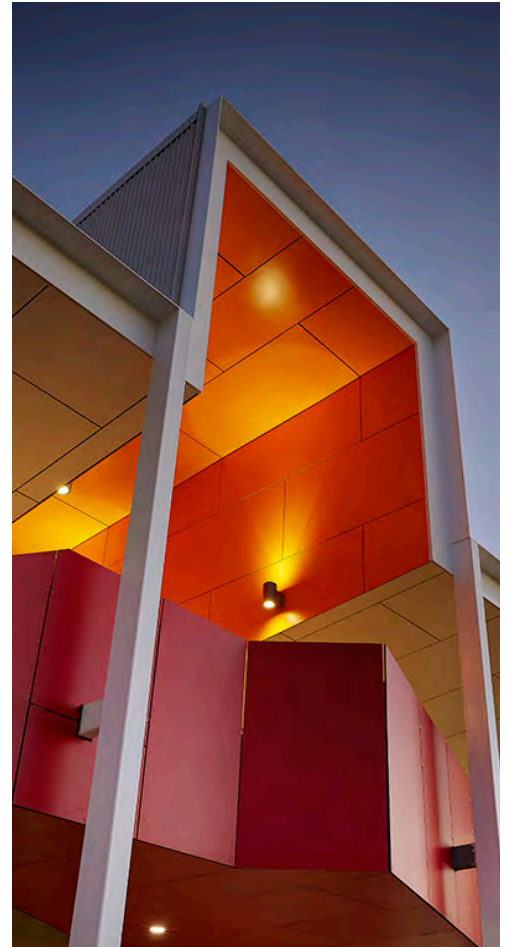
FIRE RESISTANCE

LumiClad has been tested for and passed the Early Fire Hazard Property criteria in compliance with AS/NZS 1530.3 and AS/NZS 3837 and is deemed a Group 1 Material in accordance with the Building Code of Australia (BCA), Volume 1, Specification A2.4; Fire Hazard Properties. AS/NZS 1530.3; Early Fire Hazard Properties.

-Ignition Index	0
-Spread of Flame Index	0
-Heat Evolved Index	0
-Smoke Developed Index	0-1

DURABILITY

Note : All CFC products are deemed to satisfy
Non-combustible under NCC 2019



New Factory & Showroom. Tel: +61 8 6885 5300 www.paa.net.au
60 Belmont Avenue
Rivervale 6013 Mobile 0433 486 499 Email: enquiries@paa.net.au



EXPOSURE

LumiClad outperforms all other prefinished cladding on the market.

WEATHER/U.V. RESISTANT

Unique thermosetting factory finish withstands long-term exposure to dramatic changes in weather, including extreme temperatures such as those experienced in tropical equatorial regions and sub-Arctic environments. Provides lifetime resilience.

GRAFFITI RESISTANT

Graffiti and chemical resistance allow for quick and economical removal without affecting the finished surface. LumiClad is ideal for tunnels, bridges, train stations, bus shelters, educational and public buildings, and other "targeted" structures. No repainting or high-pressure water blasting is required.

BACTERIA & MOULD RESISTANT

Toughend coating on panel front and edges prevents the adhesion or growth of bacteria and mould. Easy to keep clean. Ideal for hospitals, clinics, laboratories, food preparation areas, kitchens and abbatoirs demanding the strictest hygiene levels.

POLLUTION & GRIME RESISTANT

Resistant to pollution and industrial grime and mildew. Impervious to chemicals, solvents and cleaning agents. Requires minimal maintenance to keep an as-new appearance.

IMPACT RESISTANT

Ceramic-like surface withstands being bumped or accidentally knocked by foreign objects.

COLOUR FADE RESISTANT

PAA's coatings continue to keep their as-new appearance for decades. Won't fade, blotch, or ripple

ACOUSTIC QUALITIES

High soundproofing ratings - ideal for airports, public transport stations, schools, universities, hospitals, commercial facilities, etc.

UNLIMITED COLOUR RANGE

Thousands of standard, metallic, stone fleck, pearl, "flip" pearlescent and custom finishes & image graphic designs to choose from!



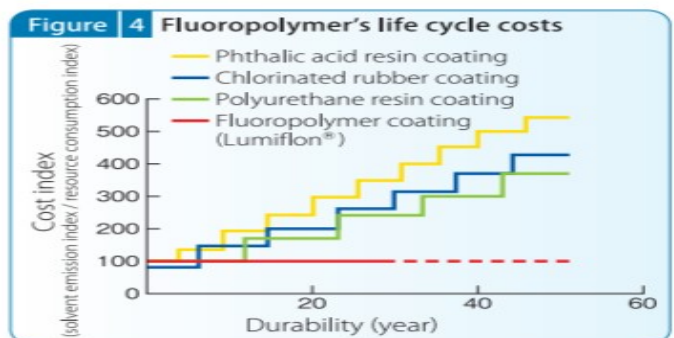
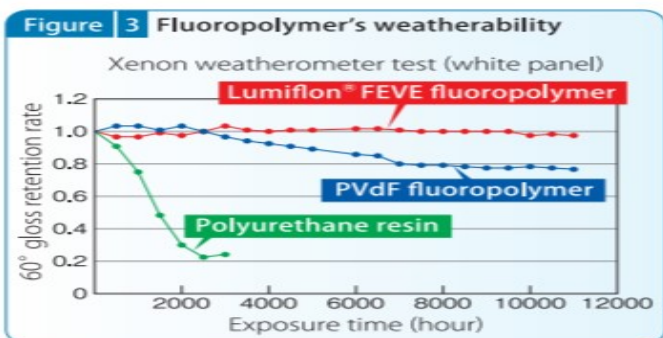
Advantages LumiClad vs. PVDF

resin type	LumiClad solution	PVDF
curing temperature	Room temp. to 230°C	solvent dispersion >250°C
60° gloss	5 to 90°	5 to 35
colour range	>230 colours	colour selection is limited
recoatibility	excellent	difficult

*LumiClad coating: no chalking or peeling

Data on Weatherability and Life Cycle Costs

The high weatherability not only leads to long-lasting beautiful coatings but also drastically reduces Life Cycle Cost because repainting time decreases compared to conventional coatings. Simultaneously, it decreases the volatility of solvents, thus reducing VOC and conserving resources (see Figures 3 and 4).



Data Sheet: PAA:LumiClad CFC & LumiClad Graphics Range

PANEL WEIGHT

THICKNESS	WEIGHT	WIDTH	LENGTH			
6mm	9.8 kg/m ²	1200mm	2400mm	2700mm	3000mm	3600mm
9mm	14.6 kg/m ²	1200mm	2400mm	2700mm	3000mm	

HANDLING AND STORAGE

LumiClad must be stacked flat, up off the ground and supported on equally spaced (max 400mm) level gluts.

Sheeting must be kept dry. When stored outdoors it must be protected from the weather.

Care should be taken to avoid damage to the ends, edges and surfaces.

Sheets must be dry prior to fixing, jointing or finishing.

SHEET TOLERANCES

-Width +0/-2mm

-Length +0/-2mm

-Thickness +10%/-0%

-Diagonals difference (max) 2mm

-Edge straightness deviation (max) 1mm

HOW TO REMOVE GRAFFITI

INTRODUCTION

Lumiflon is used as the final finishes on PAA's products, exhibit excellent graffiti resistance due to their specialized formulations. The following procedures should be closely adhered to

GRAFFITI REMOVAL

The graffiti should be removed as soon as possible after application. There are two reasons for this - first, it lifts easiest when still not cured, second, the "artist" is frustrated by early removal of his handiwork and will be less likely to repeat it.

Felt Tipped Marker Damage will lift quite easily using METHYLATED SPIRITS. Simply wipe over with saturated rag or paper tissue and repeat till all stain has disappeared.

Pressure Pack Sourced Paint will not respond to methylated spirits but will to MINERAL TURPENTINE. Again, continue to wipe over till all stain has disappeared.

Exotic Marker or Paint - it is possible that an exotic marker will be used to deface a PAA product. If either methylated spirits or mineral turps is effective, Graffiti Remover is available at most hardware stores and is very likely to be effective.

All graffiti can be cleaned off easily using "Graffiti Remover" available at most hardware stores.

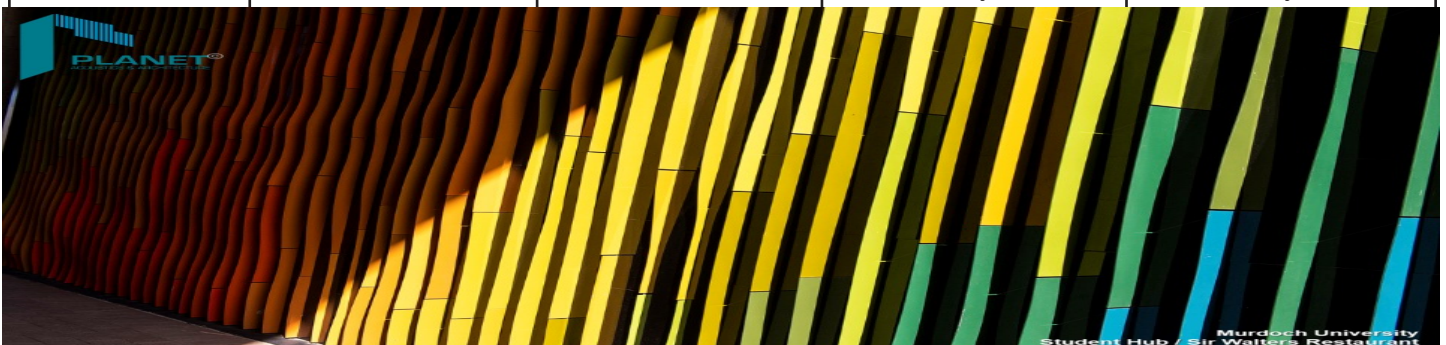


New Factory & Showroom. Tel: +61 8 6885 5300 www.paa.net.au
60 Belmont Avenue
Rivervale 6013 Mobile 0433 486 499 Email: enquiries@paa.net.au



HOW TO REMOVE GRAFFITI PAA LUMICLAD AND OTHER PRODUCTS

PROPERTIES	SITE APPLIED ACRYLIC ON COMPRESSED FIBRE CEMENT	POLYURAHANE COATED PANEL	LUMICLAD	ALUMINIM COMPOSITE PANEL
Generic Finish Type	Thermoplastic - cures by water evaporation then dispersion coalescence	Thermosetting - cures by irreversible chemical reaction	Thermosetting - cures by irreversible chemical reaction	Thermosetting - cures by irreversible chemical reaction, usually by baking
Film properties	Relatively soft, sensitive to heat, absorbs graffiti, dirt, grime, combustion gases etc	Relatively hard, smooth, sensitive to heat, dirt etc remains on surface only	Smooth, hard, insensitive to heat, dirt etc remains on surface only	Smooth, hard, insensitive to heat, dirt etc remains on surface only
Clean-up properties	Film progressively discolours as dirt etc is absorbed	Film cleans to original appearance when using mechanical washing	Film cleans to original appearance when exposed to rain or mechanical washing	Film cleans to original appearance when exposed to rain or mechanical washing
Impact resistance	Very good	Excellent	Excellent	Poor resistance to impact. Scratches more easily than
Colour stability	Usually fades quickly. Gets progressively dirtier in time	Original colour maintained short - medium term, approximately 5-10 years life expectance	Original colour maintained long term, approximately 30-50 years life expectance often even longer	Pvdf has shorter life expectancy than the LumiClad coating
Graffiti resistance	Very poor - graffiti is absorbed by the porous film. Cannot be cleaned off, repainting necessary often with bad colour matching	Average - graffiti is merely carried on the surface hence can be easily and completely wiped off with suitable agents	Very good - graffiti is merely carried on the surface hence can be easily and completely wiped off with suitable agents	Very good - graffiti is merely carried on the surface hence can be easily and completely wiped off with suitable agents
Application methods	Can only be applied on site, too soft for factory application, brush/roller leaves tracks and varying disfigurement, mostly low sheen texture, often no/poor edge treatment	Variable application methods spray brush/roller leaves tracks and varying disfigurement, mostly low sheen texture, often no/poor edge treatment	Can only be factory applied under controlled and environmentally safe conditions, robot applied for utmost consistency and smoothness, edges treated as per face, panel is back sealed for long term performance	Coil coating procedure - factory applied
Installation	Usually countersunk screws covered by filler which can 'pop' with movement	Usually countersunk screws covered by filler which can 'pop' with movement	Several options of face fixing or concealed fixing for discreet, expressed or hidden systems	Several options of face fixing or concealed fixing for discreet expressed or hidden systems
Aesthetic properties	Reasonable initially colour wise - progressive deteriorate ration due to dirt entrainment, mould growth and fade	Reasonable initially colour wise - progressive deteriorate ration due to dirt entrainment, mould growth and fade	Initial good high-sheen appearance maintained year after year - project specific warranty, any colour, metallics and pearls	Initial good high-sheen appearance maintained year after year various warranties available, small colour range due to coil coating limitations
Maintenance	Recoating usually needed every 4-5years	Recoating usually needed every 10 yrs	Inexpensive cleaning should be undertaken annually, recoatable at any time	Inexpensive cleaning should be undertaken annually, recoatable at any time



DISCLAIMER:

Since the use and application of this product is beyond our control we cannot be held responsible for product field performance. The information represented above is the result of our considerable experience with this product but is not to be construed as a performance warranty.



New Factory & Showroom. Tel: +61 8 6885 5300 www.paa.net.au
 60 Belmont Avenue
 Rivervale 6013

Mobile 0433 486 499 Email: enquiries@paa.net.au

