

PAA: ThruColour® FC

PRODUCT INFORMATION

PAA ThruColour is designed and manufactured for the harsh Australian climates with outstanding thermal, water & UV resistance to withstand the most extreme environments.

FIRE RESISTANCE

The ThruColour has been tested for and passed the Fire Hazard Property criteria in compliance with AS/NZS 3837 and is deemed a Group 1 Material in accordance with the Building Code of Australia (BCA), Volume 1, Specification C1.10; Fire Hazard Properties.

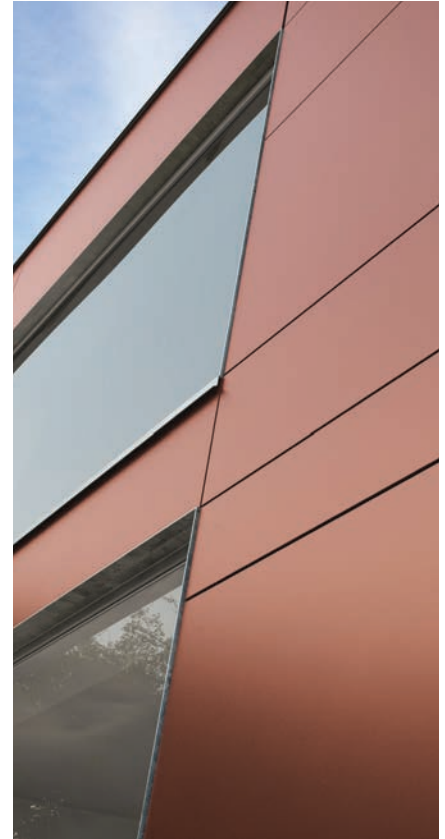
PRODUCT FEATURES

- Superior strength heavy gauge steel panel
- Integrated thermal insulation
- Non-combustible
- Light weight
- Washable
- Easy ceiling access
- Maintenance free

WEATHER RESISTANCE

PAA ThruColour Facade System conforms to the Building Code of Australia (BCA) requirements for exterior wall applications.

PAA ThruColour Facade System has been tested to AS/NZS 4284 Testing of Building Facades.



Physical Property	Result
Density	≥13.5 kg/m ²
Thermal Conductivity	≤0.35 w/(m.k)
Water Contain	≤10%
Moisture Movement	≤0.25%
Bending Strength (Oven Dry)	≥18%
Bending Strength (Water Saturated)	≥13 Mpa
Ratio Of Cross And Parallel Bending Strength	≥58%
Water Tightness (24hrs)	No water droplet
Freeze Thaw (50 times of freeze-thaw cycles)	No cracking or delaminate

Safety Property	Result
Combustibility	Group 1
Radioactivity	IRa<1.0< Ir<1.0

Product Thickness	Width	Length
9mm (8mm and 12mm optional)	1200mm/1220mm	2400mm/2440mm(3000mm optional)

SHEET TOLERANCES

- Width +0/-2mm
- Length +0/-2mm
- Thickness +10%/-0%
- Diagonals difference (max) 2mm
- Edge straightness deviation (max) 1mm

HANDLING AND STORAGE

PAA ThruColour must be stacked flat, up off the ground and supported on equally spaced (max 400mm) level gluts. Sheeting must be kept dry. When stored outdoors it must be protected from the weather. Care should be taken to avoid damage to the ends, edges and surfaces. Sheets must be dry prior to fixing, jointing or finishing.

DISCLAIMER:

Since the use and application of this product is beyond our control we cannot be held responsible for product field performance. The information represented above is the result of our considerable experience with this product but is not to be construed as a performance warranty.



New Factory & Showroom.
60 Belmont Avenue
Rivervale 6013



Tel: +61 8 6885 5300 www.paa.net.au

Mobile 0433 486 499 Email: enquiries@paa.net.au

